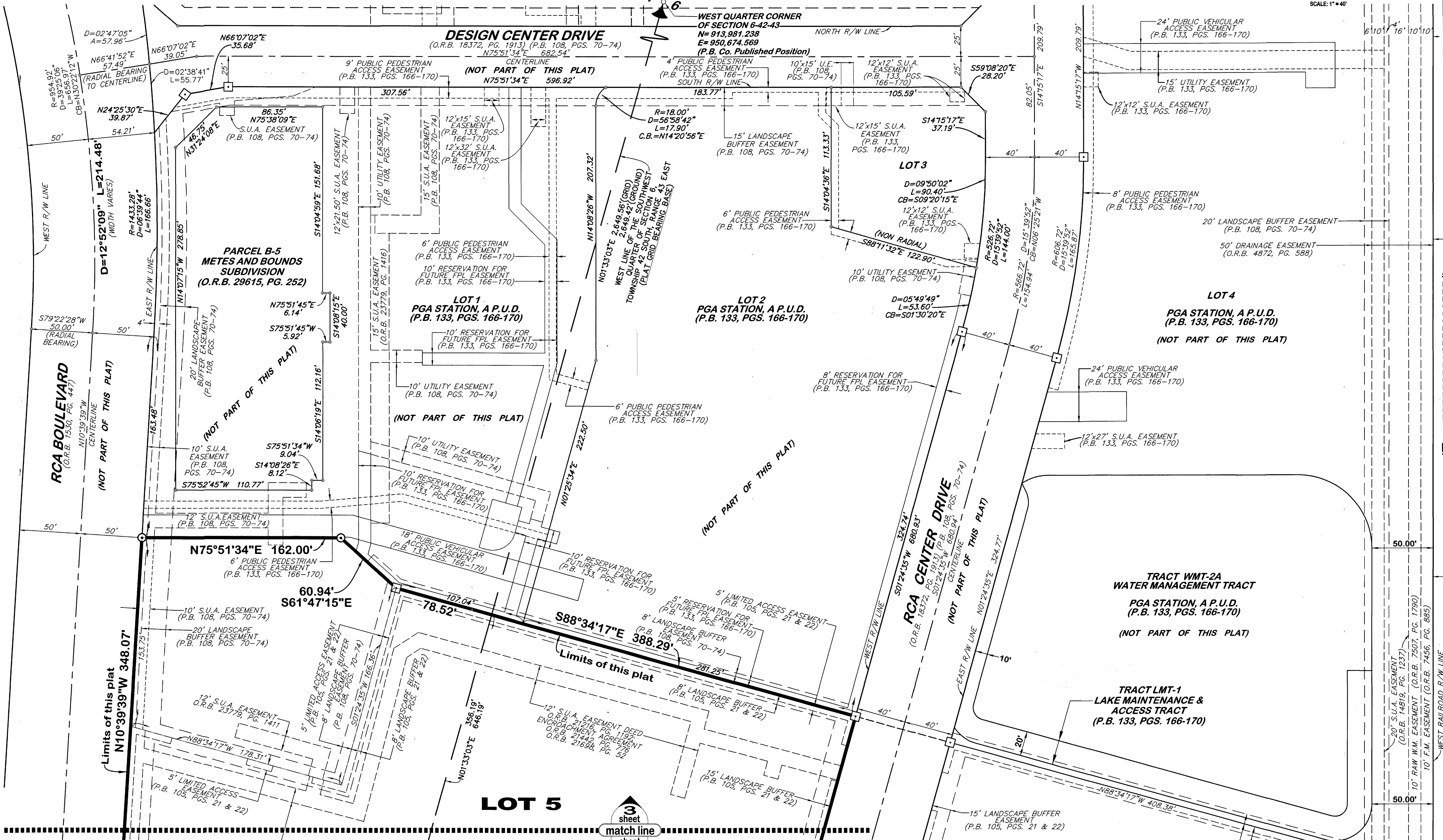
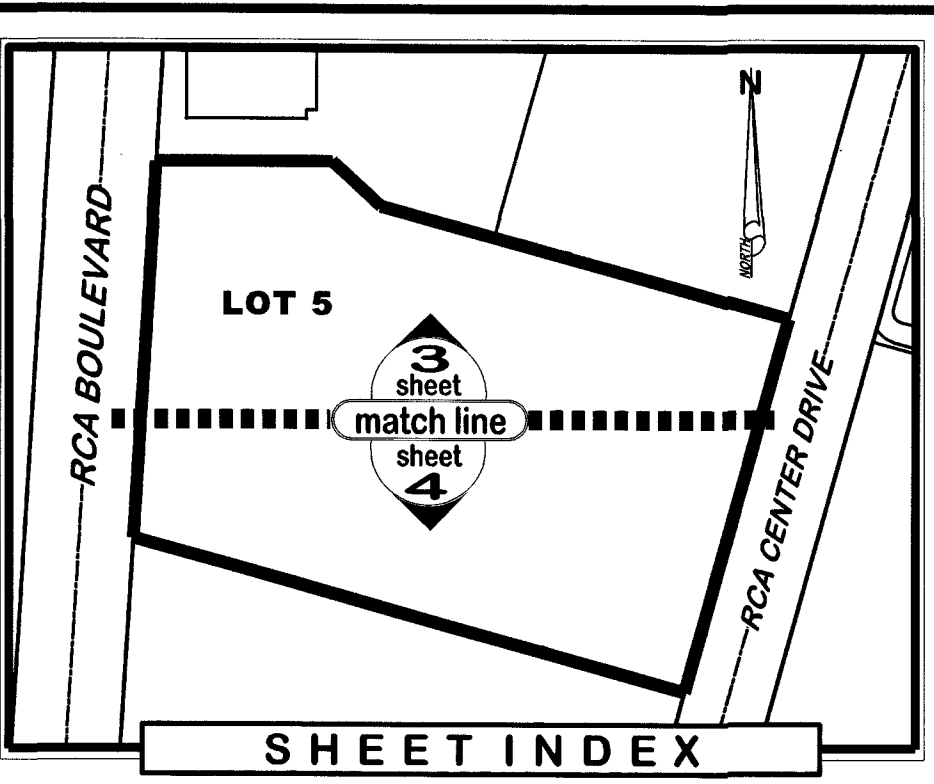
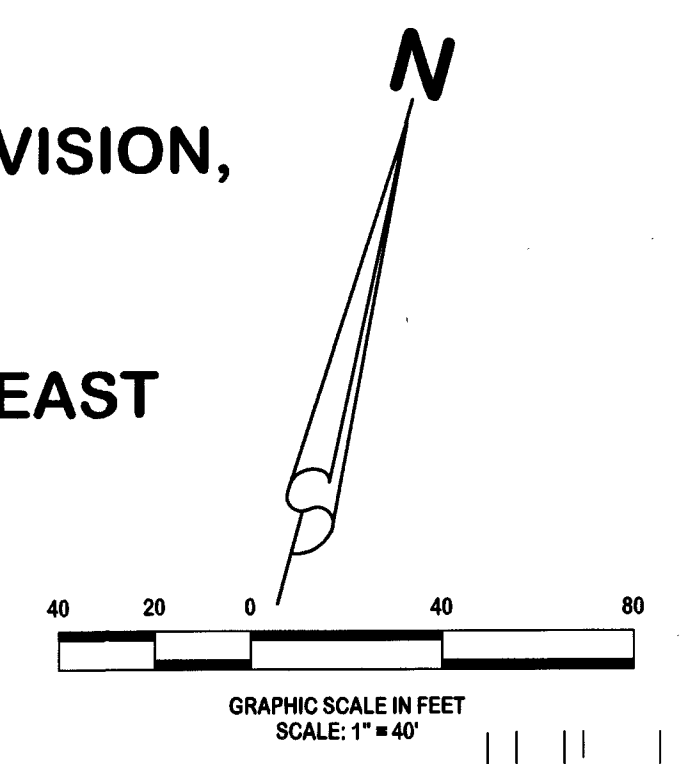


PGA STATION, A P.U.D. - LOT 5

BEING A REPLAT OF PARCEL "B-1", AS SHOWN ON MACARTHUR PARCEL 5B REPLAT, A METES AND BOUNDS SUBDIVISION, RECORDED IN OFFICIAL RECORD BOOK 24218, PAGE 850 AND A REPLAT OF THE WEST TRACT, AS SHOWN ON THE PLAT OF GARDENS STATION, RECORDED IN PLAT BOOK 105, PAGES 21 AND 22 PUBLIC RECORDS OF PALM BEACH COUNTY, FLORIDA LYING IN SECTION 1, TOWNSHIP 42 SOUTH, RANGE 42 EAST, AND SECTION 6, TOWNSHIP 42 SOUTH, RANGE 43 EAST CITY OF PALM BEACH GARDENS, PALM BEACH COUNTY, FLORIDA

FEBRUARY 2024



SHEET 3 OF 5

THIS INSTRUMENT WAS PREPARED BY KENNETH J. BUCHANAN P.S.M., IN AND FOR THE OFFICES OF LIDBERG LAND SURVEYING, INC., 675 WEST INDIANTOWN ROAD, SUITE 200, JUPITER, FLORIDA 33458. TELEPHONE (561) 746-8454.

ABBREVIATIONS:

- D = CURVE'S DELTA ANGLE
- R = CURVE'S RADIUS
- L = CURVE'S ARC LENGTH
- CB = CURVE'S CHORD BEARING
- CL = CURVE'S CHORD LENGTH
- CONC. = CONCRETE
- FPL = FLORIDA POWER & LIGHT CO.
- L.A.E. = LIMITED ACCESS EASEMENT
- L.B.E. = LANDSCAPE BUFFER EASEMENT
- MON. = MONUMENT
- O.R.B. = OFFICIAL RECORD BOOK
- P.B. = PLAT BOOK
- P.C. = POINT OF CURVATURE
- P.T. = POINT OF TANGENCY
- PCP = PERMANENT CONTROL POINT
- PG. = PAGE
- PGS. = PAGES
- PRM = PERMANENT REFERENCE MONUMENT
- R/W = RIGHT OF WAY
- S.U.A. = SEACOAST UTILITY AUTHORITY
- W/ = WITH

LEGEND:

- ☐ = DENOTES FOUND "PRM" FOUND 4"x4" CONC. MON. W/ DISK STAMPED "PRM LB 4431" UNLESS OTHERWISE NOTED
- = DENOTES SET "PRM" SET 4"x4" CONC. MON. W/ DISK STAMPED "PRM LB 4431"
- = DENOTES FOUND "PRM" FOUND MAG. NAIL W/ DISK STAMPED "PRM LB 4431"
- = DENOTES SET "PRM" SET MAG NAIL W/ DISK STAMPED "PRM LB 4431"

CAD.	K:\UST \ 064243 \ 133-166 \ 23-099-306 \ 23-099-306.DGN		
REF.	!		
FLD.	FB.	PG.	JOB 23-099-306
OFF.	CASASUS		DATE MARCH 2024
CKD.	K.J.B.	SHEET 3 OF 5	DWG. D23-099P

LIDBERG LAND SURVEYING, INC.
 675 West Indiantown Road, Suite 200,
 Jupiter, Florida 33458 TEL: 561-746-8454
 LB4431

